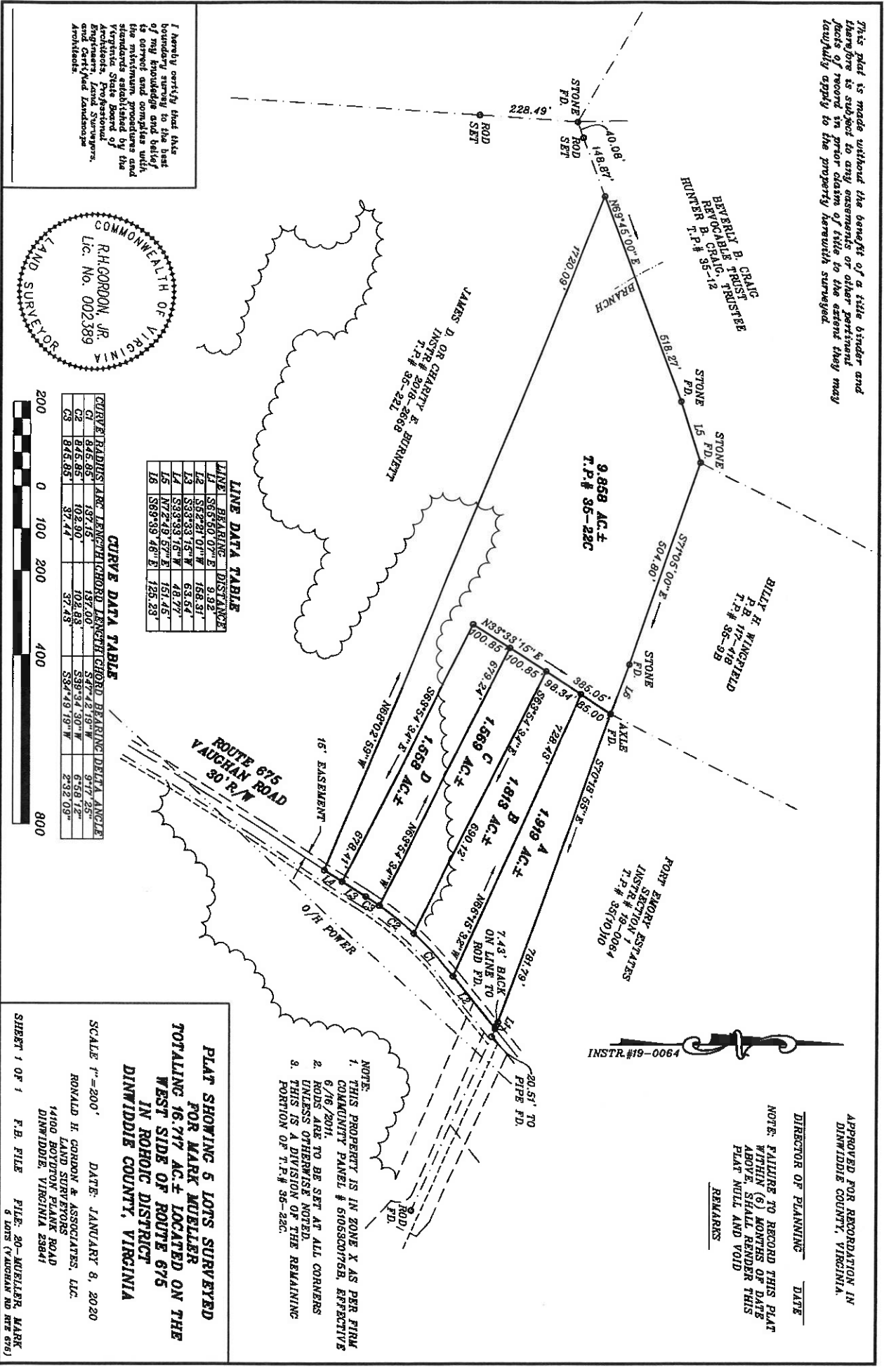


This plat is made without the benefit of a title binder and therefore is subject to any easements or other pertinent facts of record in prior class of title to the extent they may lawfully apply to the property herewith surveyed.



I hereby certify that this boundary survey to the best of my knowledge and belief is correct and complies with the minimum procedures and standards of the Virginia State Board of Architects, Professional Engineers, Land Surveyors, and Certified Landscapers and Architects.

COMMONWEALTH OF VIRGINIA  
 R.H. GORDON, JR.  
 Lic. No. 002389  
 LAND SURVEYOR

**CURVE DATA TABLE**

CHORD BEARING	CHORD LENGTH	CHORD BEARING	DELTA ANGLE
C1	846.95'	102.90'	106.88"
C2	846.95'	37.44'	389.32'
C3	846.95'	37.44'	387.49'
			19.18" W
			2.92' 05"

**LINE DATA TABLE**

LINE	BEARING	DISTANCE
L1	S85.50° 07' E	8.92'
L2	S82.21° 01' W	168.31'
L3	S83.33° 15' W	63.62'
L4	S83.33° 15' W	48.77'
L5	N72.48° 57' E	151.45'
L6	S89.39° 46' E	125.23'



**PLAT SHOWING 5 LOTS SURVEYED FOR MARK MUELLER TOTALING 16.717 AC.± LOCATED ON THE WEST SIDE OF ROUTE 675 IN ROBOIC DISTRICT DINWIDDIE COUNTY, VIRGINIA**

SCALE 1" = 200' DATE: JANUARY 6, 2020  
 RONALD H. GORDON & ASSOCIATES, LLC.  
 LAND SURVEYORS  
 14100 BOTETOWN PLAZA ROAD  
 DINWIDDIE, VIRGINIA 23041

SHEET 1 OF 1 F.B. FILE FILE: 20-MUELLER, MARK 5 LOTS (VAUGHAN RD RT# 675)

**NOTE:**  
 1. THIS PROPERTY IS IN ZONE X AS PER FIRM COMMUNITY PANEL # 61055C0176B, EFFECTIVE 6/16/2011.  
 2. RODS ARE TO BE SET AT ALL CORNERS UNLESS OTHERWISE NOTED.  
 3. THIS IS A DIVISION OF THE REMAINING PORTION OF T.P.# 36-22C.

APPROVED FOR RECORDATION IN  
 DINWIDDIE COUNTY, VIRGINIA.

DIRECTOR OF PLANNING DATE

NOTE: FAILURE TO RECORD THIS PLAT WITHIN (6) MONTHS OF DATE ABOVE SHALL RENDER THIS PLAT NULL AND VOID

REMARKS

INSTR. #19-0064

PORT EMORY ESTABLISHMENT SECTION 1 INSTR. # 19-0064 T.P.# 35(10)10

30.51' TO PIPE F.D.

74.3' BACK ON LINE TO ROD F.D.

781.78'

890.12'

690.12'

1.569 AC.±

1.813 AC.±

1.919 AC.±

1.558 AC.±

1.257 AC.±

9.858 AC.±

T.P.# 35-22C

BRANCH

518.27'

504.80'

ST105:00° E

STONE 15 P.D.

STONE 15 P.D.

STONE 15 P.D.

STONE 15 P.D.

STONE 15 P.D.

STONE 15 P.D.

STONE 15 P.D.

STONE 15 P.D.

STONE 15 P.D.

STONE 15 P.D.

STONE 15 P.D.

STONE 15 P.D.

STONE 15 P.D.

STONE 15 P.D.

STONE 15 P.D.

STONE 15 P.D.

STONE 15 P.D.

STONE 15 P.D.

STONE 15 P.D.

STONE 15 P.D.

STONE 15 P.D.

STONE 15 P.D.

STONE 15 P.D.

STONE 15 P.D.

STONE 15 P.D.

STONE 15 P.D.

STONE 15 P.D.

STONE 15 P.D.

STONE 15 P.D.

STONE 15 P.D.

STONE 15 P.D.

STONE 15 P.D.

STONE 15 P.D.

STONE 15 P.D.

STONE 15 P.D.

STONE 15 P.D.

STONE 15 P.D.

STONE 15 P.D.

STONE 15 P.D.

STONE 15 P.D.

STONE 15 P.D.

STONE 15 P.D.

STONE 15 P.D.

STONE 15 P.D.

STONE 15 P.D.

STONE 15 P.D.

STONE 15 P.D.

STONE 15 P.D.

STONE 15 P.D.

STONE 15 P.D.

STONE 15 P.D.

STONE 15 P.D.

STONE 15 P.D.

STONE 15 P.D.

STONE 15 P.D.

STONE 15 P.D.

STONE 15 P.D.

STONE 15 P.D.

STONE 15 P.D.

STONE 15 P.D.

STONE 15 P.D.

STONE 15 P.D.

STONE 15 P.D.

STONE 15 P.D.

STONE 15 P.D.

STONE 15 P.D.

STONE 15 P.D.

STONE 15 P.D.

STONE 15 P.D.

STONE 15 P.D.

STONE 15 P.D.

STONE 15 P.D.

STONE 15 P.D.

STONE 15 P.D.

STONE 15 P.D.

STONE 15 P.D.

STONE 15 P.D.

STONE 15 P.D.

STONE 15 P.D.

STONE 15 P.D.

STONE 15 P.D.

STONE 15 P.D.

STONE 15 P.D.

STONE 15 P.D.

STONE 15 P.D.

STONE 15 P.D.

STONE 15 P.D.

STONE 15 P.D.