

* FEDERAL JURISDICTIONAL WETLANDS MAY OCCUR ALONG MAJOR DRAINAGE WAYS AND STREAMS OF THIS PROPERTY. THESE WETLANDS MUST NOT BE DISTURBED WITHOUT PRIOR PERMISSION AND PERMITTING BY THE U.S. ARMY CORPS OF ENGINEERS AND/OR THE DEPARTMENT OF ENVIRONMENTAL QUALITY.

APPROVED FOR RECORDATION IN DINWIDDIE COUNTY, VIRGINIA.

DIRECTOR OF PLANNING DATE

NOTE: FAILURE TO RECORD THIS PLAT WITHIN (6) MONTHS OF DATE ABOVE, SHALL RENDER THIS PLAT NULL AND VOID

REMARKS

ROUTE 652
ASBURY ROAD

25' STRIP DEDICATED TO THE COUNTY OF DINWIDDIE FOR FUTURE WIDENING

DAVID B. & ASLEY M. BOOKMAN
D.B. 528-126
P.B. 17-703
T.P. # 67-53A

TODD M. WHITT
D.B. 528-126
P.B. 17-703
T.P. # 67-53A1

TODD M. WHITT
D.B. 239-241
P.B. 17-168
T.P. # 67-55

HEATHER & HUNTER CLAY
INSTR.# 15-32B

4.90' BACK TO ROD F.D.

PARCEL 6
20.000 AC.±
EAST SIDE PROPERTIES
INSTR.# 19-0912
T.P.# 80-99

753.23'
303.11'

384.88'
402.10'

402.10'

450.12'
S 37°18'36" W SET

ROD SET

402.10'

402.10'

402.10'

402.10'

402.10'

402.10'

402.10'

402.10'

402.10'

402.10'

402.10'

402.10'

402.10'

402.10'

402.10'

402.10'

402.10'

402.10'

402.10'

402.10'

402.10'

402.10'

402.10'

402.10'

402.10'

402.10'

402.10'

402.10'

402.10'

402.10'

402.10'

402.10'

402.10'

402.10'

402.10'

402.10'

402.10'

402.10'

402.10'

402.10'

402.10'

402.10'

402.10'

402.10'

402.10'

402.10'

402.10'

402.10'

402.10'

402.10'

402.10'

402.10'

402.10'

402.10'

402.10'

402.10'

402.10'

402.10'

402.10'

402.10'

402.10'

402.10'

402.10'

402.10'

402.10'

402.10'

402.10'

402.10'

402.10'

402.10'

402.10'

402.10'

402.10'

402.10'

402.10'

402.10'

402.10'

402.10'

402.10'

402.10'

402.10'

402.10'

402.10'

402.10'

402.10'

402.10'

402.10'

402.10'

402.10'

402.10'

402.10'

402.10'

402.10'

402.10'

402.10'

402.10'

402.10'

402.10'

402.10'

402.10'

402.10'

402.10'

402.10'

402.10'

402.10'

402.10'

402.10'

402.10'

402.10'

402.10'

402.10'

402.10'

402.10'

402.10'

402.10'

402.10'

402.10'

402.10'

402.10'

402.10'

402.10'

402.10'

402.10'

402.10'

402.10'

402.10'

402.10'

402.10'

402.10'

402.10'

402.10'

402.10'

402.10'

402.10'

402.10'

402.10'

402.10'

402.10'

402.10'

402.10'

402.10'

402.10'

402.10'

402.10'

402.10'

402.10'

402.10'

402.10'

402.10'

402.10'

402.10'

402.10'

402.10'

402.10'

402.10'

402.10'

402.10'

402.10'

402.10'

402.10'

402.10'

402.10'

402.10'

402.10'

402.10'

402.10'

402.10'

402.10'

402.10'

402.10'

402.10'

402.10'

402.10'

402.10'

402.10'

402.10'

402.10'

402.10'

402.10'

402.10'

402.10'

402.10'

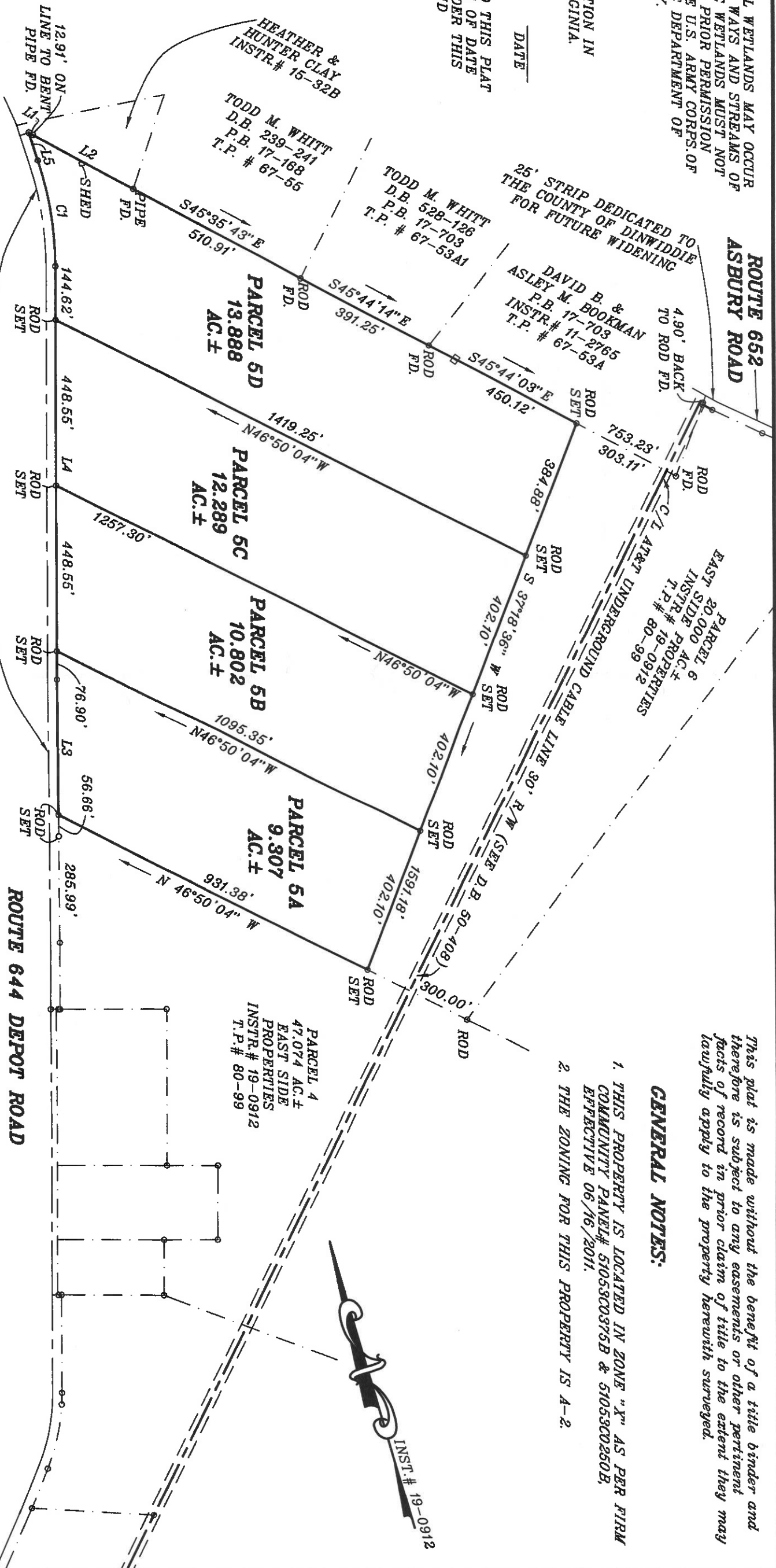
402.10'

402.10'

402.10'

402.10'

402.10'



LINE DATA TABLE

LINE	BEARING	DISTANCE
L1	S44°57'38"E	12.91'
L2	S45°46'31"E	305.54'
L3	N5°58'59"E	372.57'
L4	N6°15'41"E	1118.62'
L5	N02°10'52"W	77.21'

CURVE DATA TABLE

CURVE RADIUS	ARC LENGTH	CHORD LENGTH	CHORD BEARING	DELTA ANGLE
C1	900.00'	289.70'	N07°02'25"E	18°26'33"



I hereby certify that this boundary survey to the best of my knowledge and belief is correct and complies with the minimum procedures and standards established by the Virginia State Board of Architects, Professional Engineers, Land Surveyors, and Certified Landscape Architects.



This plat is made without the benefit of a title binder and therefore is subject to any easements or other pertinent facts of record in the prior claim of title to the extent they may lawfully apply to the property herewith surveyed.

GENERAL NOTES:

1. THIS PROPERTY IS LOCATED IN ZONE "X" AS PER FIRM COMMUNITY PANEL# 5105300375B & 5105300250B, EFFECTIVE 06/16/2011.
2. THE ZONING FOR THIS PROPERTY IS A-2.

PLAT SHOWING A DIVISION OF PARCEL 5 SURVEYED FOR EASTSIDE PROPERTIES BEING 4 PARCELS TOTALING 46.286 AC.± LOCATED ON THE EAST SIDE OF ROUTE 644 AND THE SOUTH SIDE OF ROUTE 652 IN SAPONY DISTRICT, DINWIDDIE COUNTY, VIRGINIA.

SCALE: 1"=300' DATE: JULY 22, 2019
 RONALD H. GORDON & ASSOCIATES, LLC.
 LAND SURVEYORS
 14100 BOYDTON PLANK ROAD
 DINWIDDIE, VIRGINIA 23041

SHEET 1 OF 1 F.B. FILE FILE: 19-HARRISON, HERMAN (4 INTERIOR LOTS)