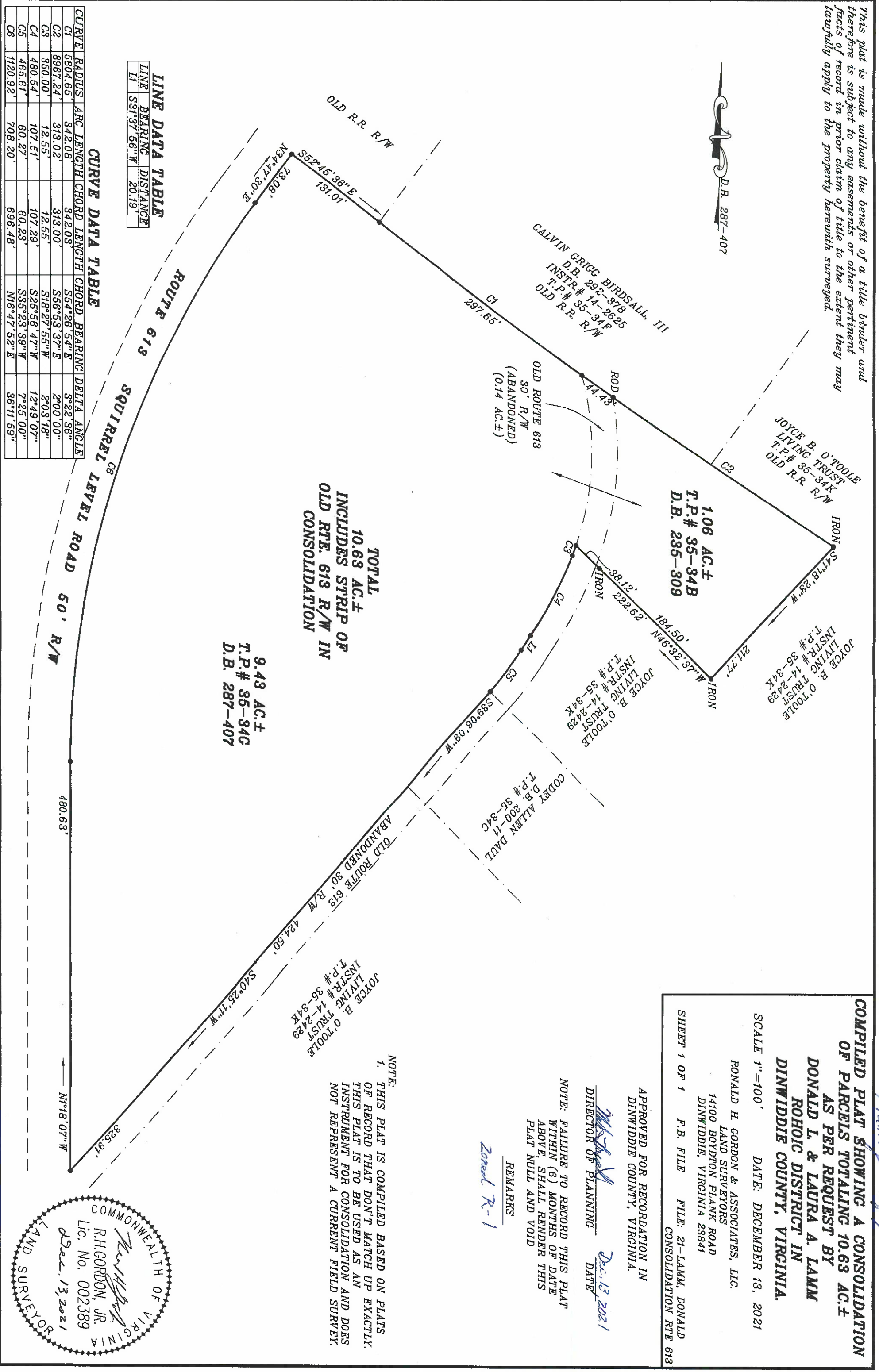


This plat is made without the benefit of a title binder and therefore is subject to any easements or other pertinent facts of record in prior claim of title to the extent they may lawfully apply to the property herewith surveyed.

D.B. 287-407



LINE DATA TABLE

LINE	BEARING	DISTANCE
L1	S31°37'56\" W	20.19'

CURVE DATA TABLE

CURVE	RADIUS	ARC LENGTH	CHORD LENGTH	CHORD BEARING	DELTA ANGLE
C1	5804.65'	342.08'	342.03'	S54°26'54\" E	3°22'36\"
C2	8967.24'	313.02'	313.00'	S56°53'39\" E	2°00'00\"
C3	350.00'	12.55'	12.55'	S18°27'55\" W	2°03'18\"
C4	480.54'	107.51'	107.29'	S25°56'47\" W	12°49'07\"
C5	465.61'	60.27'	60.23'	S35°23'39\" W	7°25'00\"
C6	1120.92'	708.20'	696.48'	N6°47'52\" E	36°11'59\"

TOTAL
10.63 AC.±
INCLUDES STRIP OF
OLD RTE. 613 R/W IN
CONSOLIDATION

9.43 AC.±
T.P.# 35-34C
D.B. 287-407

COMPILED PLAT SHOWING A CONSOLIDATION OF PARCELS TOTALING 10.63 AC.± AS PER REQUEST BY DONALD L. & LAURA A. LAMM ROHOIC DISTRICT IN DINWIDDIE COUNTY, VIRGINIA.

SCALE 1"=100' DATE: DECEMBER 13, 2021

RONALD H. GORDON & ASSOCIATES, LLC.
LAND SURVEYORS
14100 BOYDTON PLANK ROAD
DINWIDDIE, VIRGINIA 23841

SHEET 1 OF 1 F.B. FILE FILE: 21-LAMM, DONALD CONSOLIDATION RTE 613

APPROVED FOR RECORDATION IN
DINWIDDIE COUNTY, VIRGINIA

DIRECTOR OF PLANNING DATE: Dec 13 2021

NOTE: FAILURE TO RECORD THIS PLAT WITHIN (6) MONTHS OF DATE ABOVE SHALL RENDER THIS PLAT NULL AND VOID

REMARKS
Zoned R-1

NOTE:
1. THIS PLAT IS COMPILED BASED ON PLATS OF RECORD THAT DON'T MATCH UP EXACTLY. THIS PLAT IS TO BE USED AS AN INSTRUMENT FOR CONSOLIDATION AND DOES NOT REPRESENT A CURRENT FIELD SURVEY.

